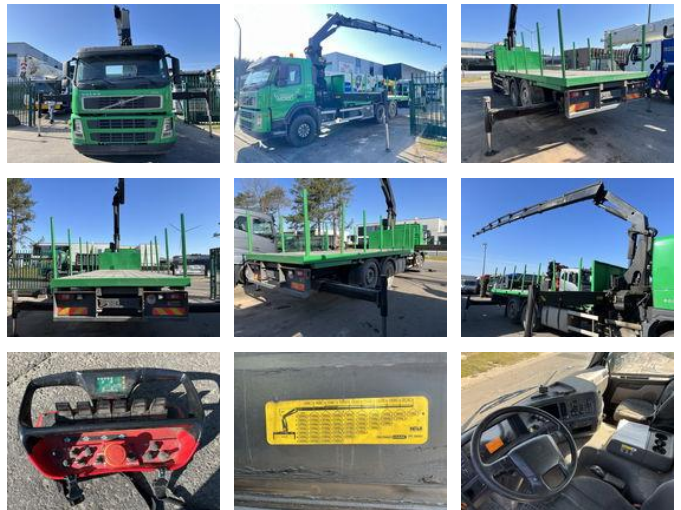


Volvo FM 300 6x2 + PALFINGER PK29002 8x (21M) - I-SHIFT - LIFT-AXLE - EURO 3 - 6,85 PLATFORM

General features

| | |
|----------------------------|------------|
| Brand | Volvo |
| Model | FM 300 |
| Subcategory | Drop side |
| Licence plate | 1WGB139 |
| Odometer reading | 502.863km |
| Construction year | 2006 |
| Date of first registration | 28-08-2006 |
| Color | Green |
| Condition | Used |
| General condition | Very good |
| Fuel | Diesel |
| Emission class | Euro 3 |
| Reference | MJC11983 |



Characteristics

| | |
|-------------------|----------|
| Empty weight | 15.905kg |
| Load capacity | 10.095kg |
| GVW | 26.000kg |
| Cabin | No |
| Cylinder contents | 9.364cc |

Volvo FM 300 6x2 + PALFINGER PK29002 8x (21M) - I-SHIFT - LIFT-AXLE - EURO 3 - 6,85 PLATFORM

Technical specifications

| | |
|--------------------|-----------|
| Number of axes | 3 |
| Axis configuration | 6x2 |
| Transmission | Automatic |
| Engine output | 300hp |

Description

Crane Tap Length: 21 m Number of hydraulic extensions: 8 Remote control: ✓ Load Hook: ✓ Rotator: × Squeeze Box: × Winch: × Pallet Hook: × = More information = Year of construction: 2006

Accessories

- Leaf spring suspension
- Air suspension