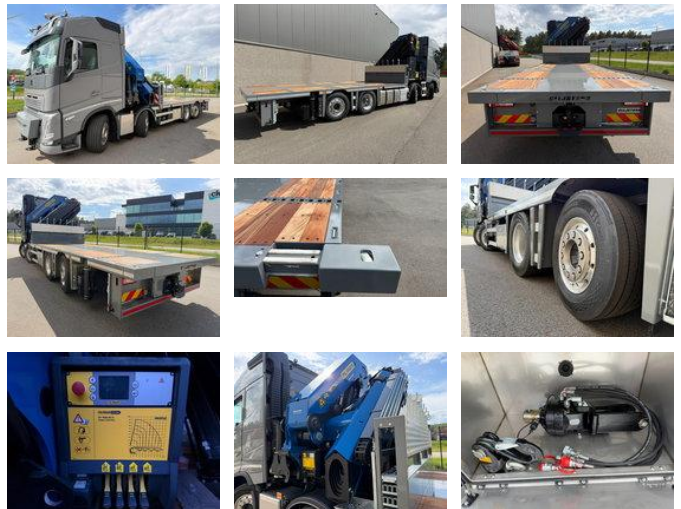


Volvo FH 540 8x2 + PALFINGER PK 78002-SH G (8x - 24m) - UNIT WAGEN - 6m30 - UITSCHUIFBARE TWISTLOCKS - ROTATOR - DYNAMIC STEERING - *NIEUW / NEW / NEUF*

General features

Brand	Volvo
Model	FH 540
Subcategory	Crane truck
Construction year	2026
General condition	Very good
Fuel	Diesel
Emission class	Euro 6e
Reference	MJC111342



Characteristics

GVW	32.000kg
Cabin	Sleeper cabin
Cylinder contents	12.777cc

Volvo FH 540 8x2 + PALFINGER PK 78002-SH G (8x - 24m) - UNIT WAGEN - 6m30 - UITSCHUIFBARE TWISTLOCKS - ROTATOR - DYNAMIC STEERING - *NIEUW / NEW / NEUF*

Technical specifications

Number of axes	4
Axis configuration	8x2
Transmission	Automatic
Engine output	540hp

Description

= Additional options and accessories = - 4-AXLES - 8x2 - A/C - AIR CONDITION - Advanced Emergency Braking System - Beacon(s) - DYNAMIC STEERING VOLVO - Engine Brake - I shift - Lift Axle - Rotator - Sleeping cabin - Sper - Spoilers - Steering Axle - VEB - Work lamp(s) = Remarks = Crane Crane length: 20.3 m Number of hydraulic extensions: 8 Number of support legs: 6 Number of extra functions: 2 Remote control: ✓ Load Hook: ✓ Rotator: ✓ Meter capacity: 20.3 m Capacity kilo: 20500 kg Superstructure Construction year: 2026 = More information = Year of manufacture: 2026 Make of engine: VOLVO Damages: none

Accessories

- Trailer coupling
- Anti-lock braking system
- Reversing camera
-
- Electrically operated windows
- Electrically adjustable door mirrors
- Refrigerator
- Leather interior
- Light (metallic) rims
- Air horn
- Air suspension
- Fog lights
- Navigation system
- Parkassist
- Disc brakes
- Sleeper cab
- Spoilers
- Towbar
- Coupling
- Spotlights