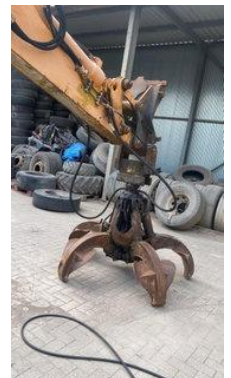


Liebherr A 900 B A 900 B 4x4 + GRABBER / GREIFER / GRAPIN / POLIEP / PINZA - DEUTZ 4 CYLINDER - BLADE / BLATT / LAME

General characteristics

Brand	Liebherr
Subcategory	Crawler excavator
Year of construction	1990
Date of first registration	06-06-1990
Hours displayed	7800
Condition	Used
Fuel	Diesel
Reference	MJC111366
CE marking	And



Properties

GVW

14.000kg

Liebherr A 900 B A 900 B 4x4 + GRABBER / GREIFER / GRAPIN / POLIEP / PINZA - DEUTZ 4 CYLINDER - BLADE / BLATT / LAME

Technical specifications

Number of axes 2

Axis configuration 4x4

Description

= Additional options and accessories = - 4x4 = Remarks = Condition CE type: CE, EPA, TÜV = More information = Make of engine: DEUTZ

Accessories

- All wheel drive