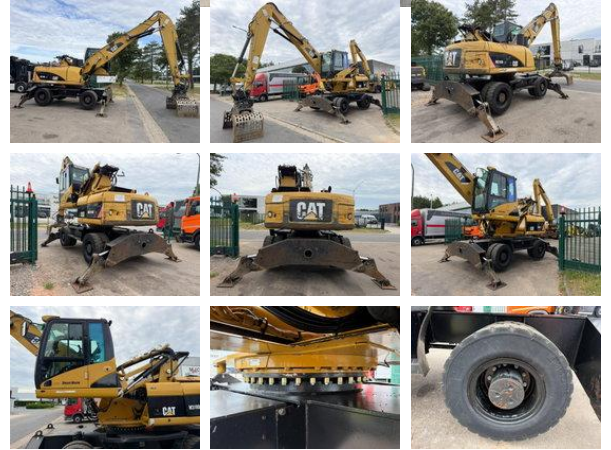


Caterpillar M 318 D M 318 D OVERSLAGKRAAN / MATERIAL HANDLER / UMSCHLAGBAGGER - CE - BE MACHINE - GRABBER INCLUDED

General characteristics

Brand	Caterpillar
Subcategory	Material handler
Year of construction	2009
Date of first registration	06-06-2009
Hours displayed	15819
Condition	Used
Fuel	Diesel
Reference	MJC111427



Properties

Single weight	20.100kg
---------------	----------

Technical specifications

Number of axes	1
Axis configuration	4x4
Transmission	Automatic
Drive	wheels

Description

= Additional options and accessories = - A/C - AIR CONDITION = Remarks = General Country of production: FRANCE Condition CE type: CE, EPA, TÜV = More information = Make of engine: Caterpillar

Accessories

- All wheel drive