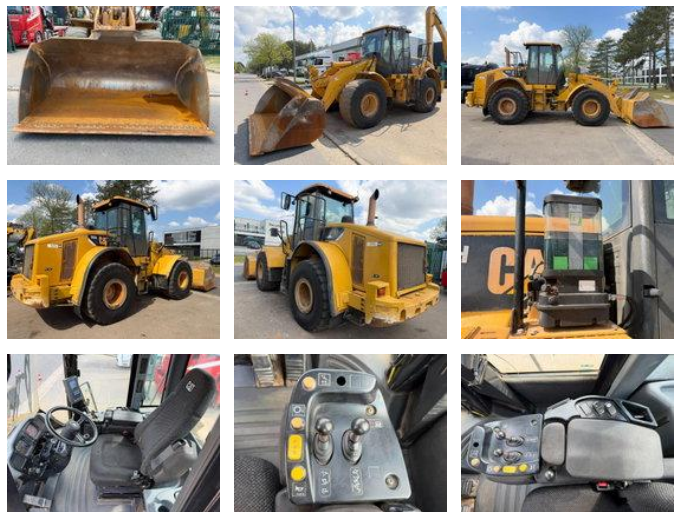




Caterpillar 962H 962H CE / EPA - SCALE - CENTRAL GREASING - A/C - 23.5R25 - BE MACHINE

General characteristics

Brand	Caterpillar
Subcategory	Wheel loader
Year of construction	2008
Date of first registration	01-01-2008
Hours displayed	16664
Condition	Used
General state	Good
Fuel	Diesel
Reference	MJC111141
CE marking	And



Properties

Single weight	19.740kg
Cabin	cabin.

Caterpillar 962H 962H CE / EPA - SCALE - CENTRAL GREASING - A/C - 23.5R25 - BE MACHINE

Technical specifications

Number of axes	2
Axis configuration	4x4
Drive	wheels

Description

= Additional options and accessories = - 4x4 - A/C - AIR CONDITION = Remarks = General Country of production: BELGIUM
Condition CE type: CE, EPA, TÜV = More information = Chassis type: articulated Engine type: Caterpillar C7

Accessories

- All wheel drive
- Central lubrication