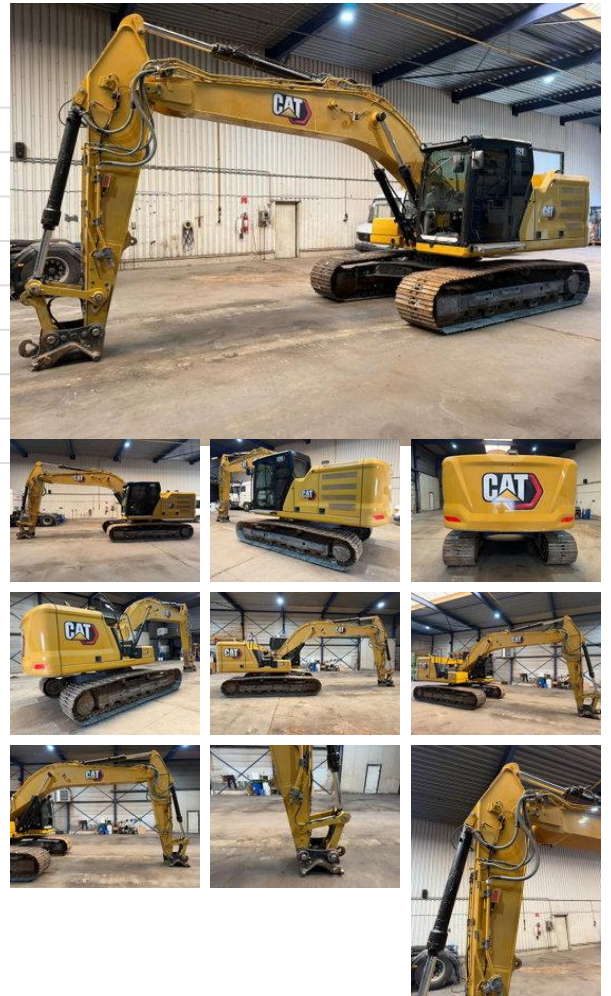


# Caterpillar 320 NEXT GEN 320 NEXT GEN - FULL HYDR - CENTRAL GREASING - A/C - CAMERA - CE - BE MACHINE

## General characteristics

Brand	Caterpillar
Subcategory	Crawler excavator
Year of construction	2019
Date of first registration	06-06-2019
Hours displayed	7165
Condition	Used
General state	Good
Fuel	Diesel
Reference	MJC111448
CE marking	And



## Properties

Single weight	22.100kg
Cabin	cabin.

## Technical specifications

Drive tracking

## Description

= Additional options and accessories = - A/C - AIR CONDITION = Remarks = Condition CE type: CE, EPA, TÜV = More information = Make of engine: Caterpillar

## Accessories

- Parkassist
- Reversing camera